



MILAN SERIES PS-TLXXWL64PLUS

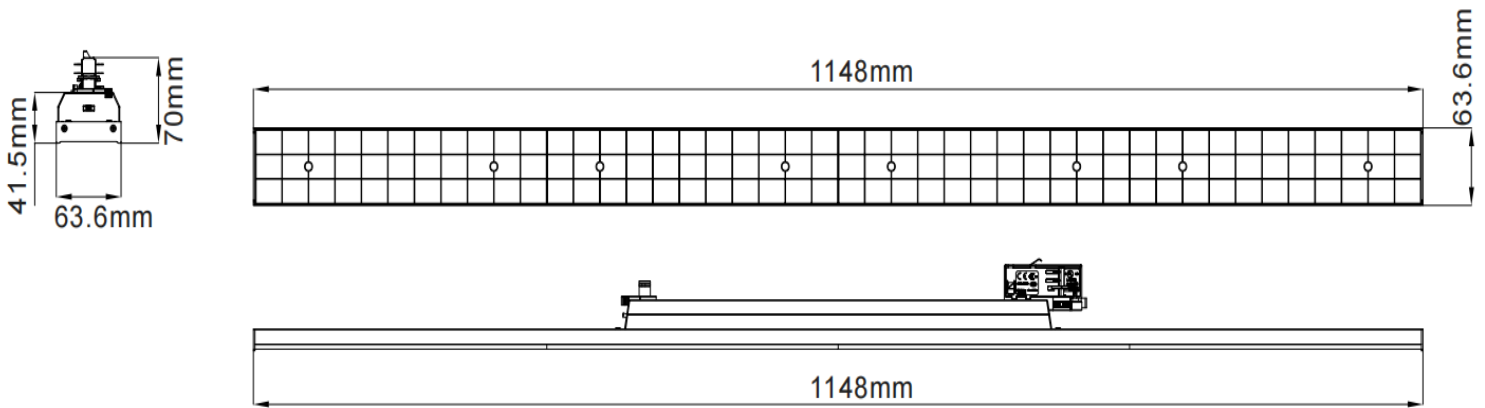
WATTAGE FROM 35-70W

SYSTEM EFFICIENCY UP TO 160 lm/W

PERFECTLY FIT ON TRACK

PRODUCT DATASHEET

Milan Series Track Linear Light 35-70W



Areas of application

- Supermarket, Shopping Mall
- Retail Store
- Library
- Car Shop, Office, Meeting Room

Product features

- PS-TLXXWL64PLUS up to 160 lm/W, energy saving
- Quality lens to provide clean & uniform lighting
- Professional SMD LEDs with carefully selected batch SDCM<3
- Aluminum housing with convective holes for better heat dissipation

Product benefits

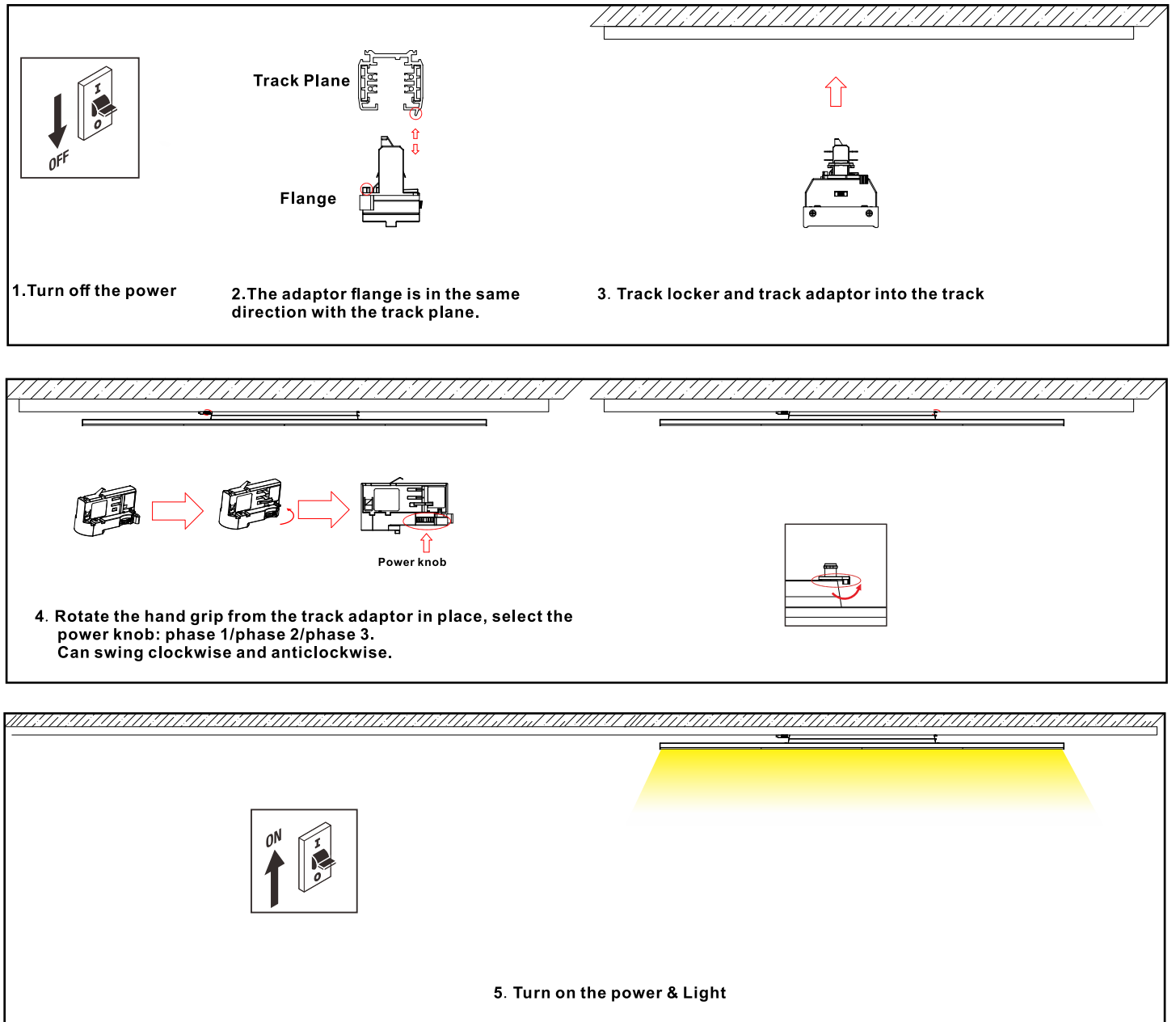
- Employs a high PF flicker-free power supply
- Easy and quick installation with multiple track adapters
- Elegant and compact design Compliant with CE/CB/RoHS/SAA/ ENEC certificates

Specification	
Power	35/40/50/60/70
LED	Lumileds/Osram SMD 2835
Driver	Osram/Tridonic/BOKE
Input Voltage	AC220-240V, 50/60 Hz
CCT	2700/3000/3500/4000/5000 K
CRI	83/92 Ra
SDCM	<3
Beam Angle	30°/60°/90°/120°/LR25/LR30/P20
Track Adapter	1 Phase / 3 Phase
System Efficacy	150-160 lm/W
Housing Material	Aluminum
Housing Size	L1148*W64*H70 mm
Colour Of Housing	White/ Black
PF	>0.9
THD	<15%
Dimmable	On-off / 0-10V / Triac / Dali/ Casambi

PRODUCT DATASHEET

Milan Series Track Linear Light 35-70W

Installation



Installation instructions:

Electrical connection must only be carried out by skilled, trained and authorized persons.

- Before installation, please ensure the main power is off.
- Be sure that the local power outlet matches that of the required voltage for this unit.
- Always mount this unit in safe and stable matter.
- Do not remove the cover under any conditions. There are no user serviceable parts inside.
- This unit is intended for indoor use only, use of this product outdoors, would void all warranties.